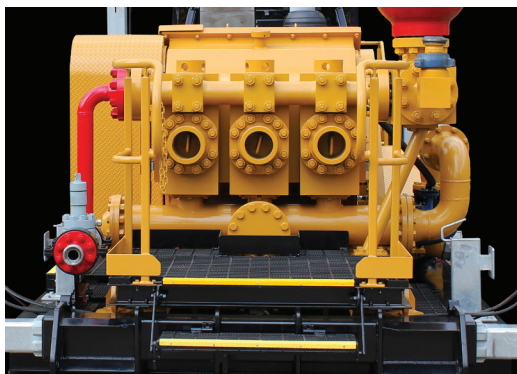
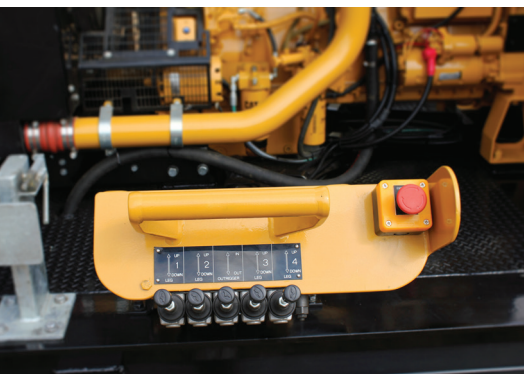




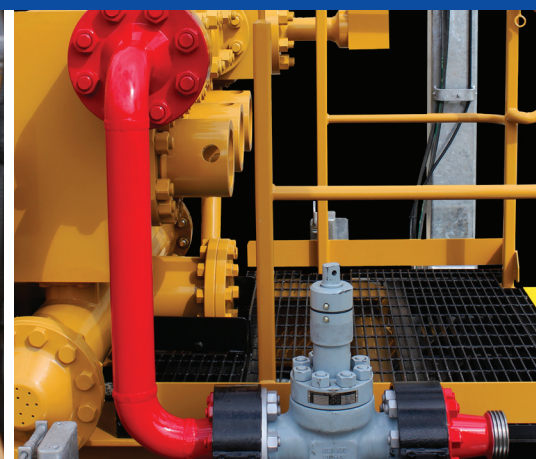
## MPI NF500 Triplex Mud Pump

**Set up in record time with a mud pump designed for Australian conditions, utilising high quality components and engineered to withstand our harsh work environment.**

MPI Mud Pumps feature hydraulically controlled outriggers that enable rapid deployment directly from a drop deck trailer to the drilling pad. Drive in, extend outriggers, drive out—you're ready to connect and drill. Controls via umbilical remote from the drill floor. Maximum flow 535 GPM. Maximum pressure 3945 PSI.







## MPI NF500 pump specifications

Length of skid	9.28 meters
Width of skid	2.5 meters
Height of Pump	2.92 meters
Weight	23000kgs (approx)
Jack up height for self loading	1.65 meters
Fuel Capacity ( more than 1 shift)	1000 litres
Engine	Caterpillar C15
Horsepower	500hp
Starting system	Air and Electric available
Allison Automatic Transmission	Oil Field Service Transmission
Remote control	Umbillical to drill floor
Maximum Flow	535gpm
Maximum Pressure	3500PSI

### MPI Mud Pumps

9-11 Staple Street  
Seventeen Mile Rocks Qld 4073

Phone: +61 7 3715 7889  
Fax: +61 7 3715 8809

info@mudpumps.com.au  
www.mudpumps.com.au

© 2014 MPI Pty Ltd. All Rights Reserved.

